

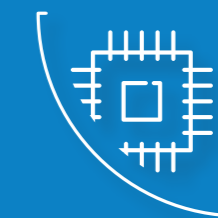


Material Code	Material Description	Properties and Applications	Most Recommended Ribbons	Alternative Ribbons
482 596 597 670 988	2 mil white Polyimide with paper liner *988- recommended for small size labels.	2 mil white Polyimide labels, suitable for most labeling needs in SMT assembly lines - Auto Apply or manual placement. Withstand both lead & lead free reflow processes and also durable to wave soldering, cleaning, conformal coating, heat and solvents. 597, 670, 988 – Durable to the majority of processes. 482, 596 – recommended for more aggressive processes.	For materials: 596, 597, 670, 988 Recommended ribbon: 104 For material 482: 140	103 318
470 471 680 820 987	2 mil white Polyimide with Polyester liner	2 mil white Polyimide, suitable for most labeling needs in SMT assembly lines with emphasis on Auto Apply placement. Withstand both lead/lead free reflow processes. Durable to wave soldering, cleaning, conformal coating, heat and solvents. 471, 680, 987 – Durable to the majority of processes. 470, 820 – recommended for more aggressive processes.	For materials: 470, 471, 680, 987 Recommended ribbon: 104 For material: 820 Recommended ribbon: 140	103 318
767	2 mil green Polyimide	2 mil green Polyimide, suitable for most labeling needs in SMT assembly lines as well as to distinguish lead free PCB's from leaded PCB's.	140	103
752	2 mil yellow Polyimide	2 mil yellow Polyimide, suitable for most labeling needs in SMT assembly lines.	140	103
770	2 mil light yellow Polyimide	2 mil light yellow Polyimide, suitable for most labeling needs in SMT assembly lines.	104	
750	Matte tan Polyimide	Matte tan Polyimide, suitable for most labeling needs in SMT assembly lines.	104	103
720	2 mil ESD safe white Polyimide	2 mil ESD safe white Polyimide, suitable for most labeling needs in SMT assembly lines.	104	103
949	5 mil Polyimide silicone adhesive tape	5 mil Polyimide masking material. Used for electrical isolation, wave soldering masking and reflow-gold finger masking.		



AUTO- APPLY EXPERT CATALOG CCL'S LABELS FOR HOVER-DAVIS FEEDERS

CCL develops and manufactures a wide range of auto apply and masking labels specially designed to work with Hover-Davis feeders



Tel: +972-9-769-1700 | Fax: +972-9-748-6270
israelsales@cclind.com | <http://nortecid.com>
<https://ccldesignelectronics.com/>



HOVER DAVIS FEEDERS ENABLE AUTOMATED LABEL APPLICATION USING YOUR EXISTING SMT MACHINES

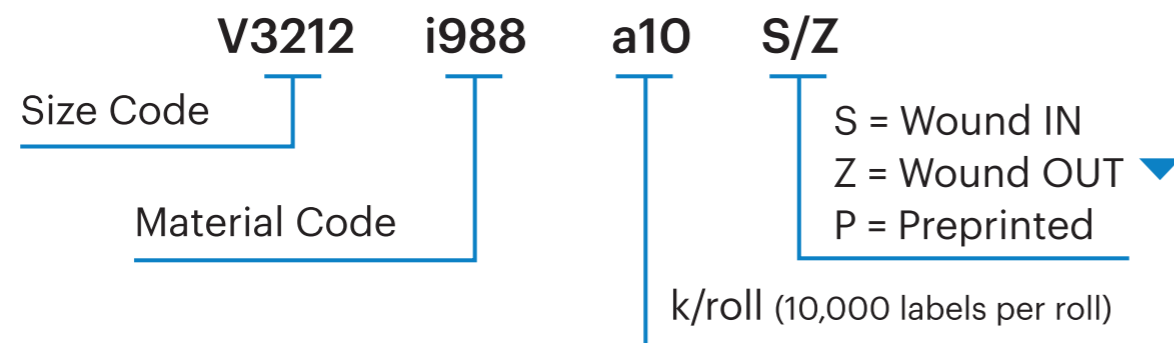
- Reduce cost and minimize manual labor with automation
- Faster and more accurate than manual placement
- increase utilization of your existing SMT machines
- Premium high-temperature labels by CCL
- Blank or preprinted, laser markable and removable material options
- Flexibility in sizes ranging from 3mm up to 58mm
- UL approved label and ribbon options

CCL offers Auto Apply labels in any shape or form with compatible ribbons, available with Paper or Polyester liners.



= **COST REDUCTION**

PART NUMBERS CODE IS AS FOLLOWS



Label Size	Height mm	Width mm	Liner Width mm	Width Inches	Height Inches	Liner Width Inches
V3001	2.79	3.81	19.05	0.15	0.11	0.75
V3029	2.79	7.62	19.05	0.30	0.11	0.75
V3038	3	3	19.05	0.12	0.12	0.75
V3438	3	3	11.43	0.12	0.12	0.45
V3027	3	5	19.05	0.20	0.12	0.75
V3062	3.5	6	15	0.24	0.14	0.59
V3479	3.6	7.5	21.5	0.30	0.14	0.84
V3319	3.99	11.43	15.87	0.45	0.16	0.62
V3325	4	4	11.43	0.16	0.16	0.45
V3362	4	4	12	0.16	0.16	0.47
V3525	4	4	25.4	0.16	0.16	1
V3665	4	4	12.7	0.16	0.16	0.5
V3725	4	4	12	0.16	0.16	0.47
V3738	4	6	17	0.24	0.16	0.67
V3461	4	14	17	0.55	0.16	0.67
V3043	4	15	20	0.59	0.16	0.79
V3009	4.01	7.01	16	0.28	0.16	0.63
V3500	4.08	16.51	19.51	0.65	0.16	0.77
V3072	4.2	4.3	10.3	0.17	0.17	0.41
V3033	4.32	16.51	25.4	0.65	0.17	1
V3034	4.45	6.93	19.05	0.27	0.18	0.75
V3556	4.5	32	38	1.26	0.18	1.5
V3573	5	3	12	0.12	0.20	0.47
V3115	5	5	23	0.20	0.20	0.91
V3769	5	5	20	0.20	0.20	0.79
V3991	5	5	12.7	0.20	0.20	0.5
V3506	5	10	25.4	0.39	0.20	1
V3539	5	10.5	16.5	0.41	0.20	0.65
V3900	5	12	30	0.47	0.20	1.18
V3973	5	15	24.5	0.59	0.20	0.96
V3676	5	19.4	25.4	0.76	0.20	1
V3800	5	23	29	0.91	0.20	1.14
V3502	5	25	30	0.98	0.20	1.18
V3379	5	35	41	1.38	0.20	1.61
V3046	5	40	43	1.57	0.20	1.69
V3492	5	45	51	1.77	0.20	2.01
V3069	5.08	5.08	25.4	0.20	0.20	1
V3358	5.08	5.08	11.43	0.20	0.20	0.45
V3256	5.08	7.62	11.43	0.30	0.20	0.45
V3035	5.08	12.7	19.05	0.50	0.20	0.75
V3923	5.08	12.7	15.88	0.50	0.20	0.63
V3000	5.08	16.51	24.5	0.65	0.20	0.96
V3113	5.08	16.51	22.51	0.65	0.20	0.89
V3301	5.08	16.51	21.51	0.65	0.20	0.85
V3513	5.08	16.51	23	0.65	0.20	0.91
V3047	5.08	30.48	37	1.20	0.20	1.45
V3503	5.1	7	12.7	0.28	0.20	0.5
V3561	5.1	7	16.5	0.28	0.20	0.65
V3039	5.33	5.33	19.05	0.21	0.21	0.75
V3824	5.5	5.5	25.4	0.22	0.22	1
V3299	5.5	10	20	0.39	0.22	0.78
V3554	5.5	10	14	0.39	0.22	0.55
V3028	5.84	5.84	19.05	0.23	0.23	0.75
V3210	6	3.5	11.43	0.14	0.24	0.45
V3022	6	6	25	0.24	0.24	0.98
V3425	6	6	11.5	0.24	0.24	0.45
V3723	6	6	17	0.24	0.24	0.67
V3790	6	6	11.5	0.24	0.24	0.45
V3116	6	15	18	0.59	0.24	0.71
V3517	6	15	18	0.59	0.24	0.71
V3507	6	17	23	0.67	0.24	0.9
V3048	6	19	25	0.75	0.24	0.98
V3530	6	30	36	1.18	0.24	1.42
V3228	6	35	41	1.38	0.24	1.61
V3189	6	40	42	1.57	0.24	1.65
V3377	6.35	5.08	17.78	0.20	0.25	0.7
V3011	6.35	6.35	11.43	0.25	0.25	0.45
V3202	6.35	6.35	30	0.25	0.25	1.18
V3302	6.35	6.35	11.43	0.25	0.25	0.45
V3420	6.35	6.35	20	0.25	0.25	0.79
V3823	6.35	6.35	25.4	0.25	0.25	1
V3316	6.35	12.7	25.4	0.50	0.25	1
V3359	6.35	12.7	25.4	0.50	0.25	1
V3647	6.35	12.7	25.4	0.50	0.25	1
V3896	6.35	15.24	25.4	0.60	0.25	1
V3300	6.35	19.05	22.23	0.75	0.25	0.88
V3304	6.35	19.05	25.05	0.75	0.25	0.99
V3495	6.35	21.59	28.58	0.85	0.25	1.13
V3591	6.35	22.23	27.23	0.88	0.25	1.07
V3910	6.35	22.85	28.57	0.90	0.25	1.12
V3328	6.35	25.4	30.48	1.00	0.25	1.2
V3348	6.35	25.4	30.48	1.00	0.25	1.2
V3409	6.35	25.4	30.48	1.00	0.25	1.2
V3324	6.35	31.75	37.75	1.25	0.25	1.49
V3902	6.35	31.75	37.75	1.25	0.25	1.49
V3318	6.35	34.93	40.64	1.38	0.25	1.6

Label Size	Height mm	Width mm	Liner Width mm	Width Inches	Height Inches	Liner Width Inches
V3378	6.35	34.93	40.64	1.38	0.25	1.6
V3081	6.35	38.1	44.45	1.50	0.25	1.75
V3339	6.35	38.1	41.9	1.50	0.25	1.65
V3379	6.4	8	25.4	0.31	0.25	1
V3982	6.4	25.4	31.4	1.00	0.25	1.24
V3397	6.5	16.5	20.5	0.65	0.26	0.8
V3212	6.99	12.7	18.7	0.50	0.28	0.74
V3555	6.99	12.7	15.24	0.50	0.28	0.6
V3560	6.99	12.7	16.5	0.50	0.28	0.65
V3013	7	7	25	0.28	0.28	0.98
V3080	7	7	20	0.28	0.28	0.79
V3303	7	7	11	0.28	0.28	0.43
V3349	7	7	18	0.28	0.28	0.71
V3353	7	7	44	0.28	0.28	1.73
V3374	7	7	11	0.28	0.28	0.43
V3433	7	7	20	0.28	0.28	0.79
V3440	7	7	25.4	0.28	0.28	1
V3627	7	7	11.43	0.28	0.28	0.45
V37741	7	7	23	0.28	0.28	0.9
V3290	7	11	21	0.43	0.28	0.83
V3565	7	16	22	0.63	0.28	0.87
V3537	7	18	23	0.71	0.28	0.9
V3213	7	22	25.4	0.87	0.28	1
V3373	7	25	30	0.98	0.28	1.18
V3006	7.62	35.56	41.56	1.40	0.30	1.64
V3037	7.87	7.87	19.05	0.31	0.31	0.75
V3612	7.93	7.93	12.7	0.31	0.31	0.5
V3117	8	8	12.7	0.31	0.31	0.5
V3547	8	8	25.4	0.31	0.31	1
V3471	8	12	15	0.47	0.31	0.59
V3599	8	14	30	0.55	0.31	1.18
V3774	8	20	26	0.79	0.31	1.02
V3416	8	25	31	0.98	0.31	1.22
V3307	8	38	41	1.50	0.31	1.61
V3716	8.5	16	23	0.63	0.33	0.91
V3223	9	9	12.7	0.35	0.35	0.5
V3576	9	9	15	0.35	0.35	0.59
V3385	9	32	35	1.26	0.35	1.38
V3520	9.5	9.5	15	0.37	0.37	0.59
V3350	9.5	9.5	16	0.37	0.37	0.63
V3466	9.5	9.5	25	0.37	0.37	0.98
V3193	9.5	9.5	44	1.52	0.37	1.73
V3567	9.53	9.53	17.6	0.38	0.38	0.69
V3030	9.53	25.4	31.75	1.00	0.38	1.25
V3483	9.53	50.8	53.34	2.00	0.38	2.1
V3384	9.65	25.4	31.4	1.00	0.38	1.24
V3312	9.7	25.4	32.49	1.00	0.38	1.28
V3376	9.8	25	31	0.98	0.39	1.22
V3045	10	10	14	0.39	0.39	0.55
V3114	10	10	23	0.39	0.39	0.91
V3441	10	10	25.4	0.39	0.39	1
V3606	10	10	22	0.39	0.39	0.86
V3679	10	15	17	0.59	0.39	0.67
V3059	10	18	20	0.71	0.39	0.79
V3071	10	10	25.4	0.71	0.39	1
V3200	10	18	20	0.71	0.39	0.79
V3403	10	18	20	0.71	0.39	0.79
V3015	10	19	25	0.75	0.39	0.98
V3123	10	20	26	0.79	0.39	1.02
V3018	10	30	32	1.18	0.39	1.26
V3609	10	35	49	1.38	0.39	1.92
V3366	10.16	7.62	17.78	0.30	0.40	0.7
V3819	10.16	20.07	25.4	0.79	0.40	1
V3036	10.92	12.7	19.05	0.50	0.43	0.75
V3354	11	31	37	1.22	0.43	1.46
V3338	12	12	18	0.47	0.47	0.71
V3501	12	12	15	0.47	0.47	0.59
V3360	12	38	41.9	1.50	0.47	1.65
V3568	12.7	12.7	17.6	0.50	0.50	0.69
V3427	12.7	25.4	30.4	1.00	0.50	1.19
V3406	14	25	30	0.98	0.55	1.18
V3084	14.22	21.08	25.4	0.83	0.562	1
V3278	15	15	18	0.59	0.59	0.71
V3341	16	32	38	1.26	0.63	1.5
V3528	17	6	16	0.24	0.67	0.63
V3010	19	19	25	0.75	0.75	0.98
V3335	19.05	6.35	11.43	0.25	0.75	0.45
V3032	19.05	19.05	31.75	0.75	0.75	1.25
V3469	19.5	29.5	32	1.16	0.77	1.26
V3417	22	48	52	1.89	0.87	2.05
V3241	22.86	22.86	25.4	0.90	0.90	1
V3496	25	35	41	1.38	0.98	1.61
V3908	25.4	50.8	53.97	2.00	1.00	2.12
V3025	30	40	43	1.57	1.18	1.69
V3024	47	6	25	0.24	1.85	0.98

RV 3/2019